



6th Grade Art Virtual Learning

Class: 6th Grade Art

April 13, 2020



Lesson: April 13, 2020

Objective/Learning Target: Which color schemes work best for what design?

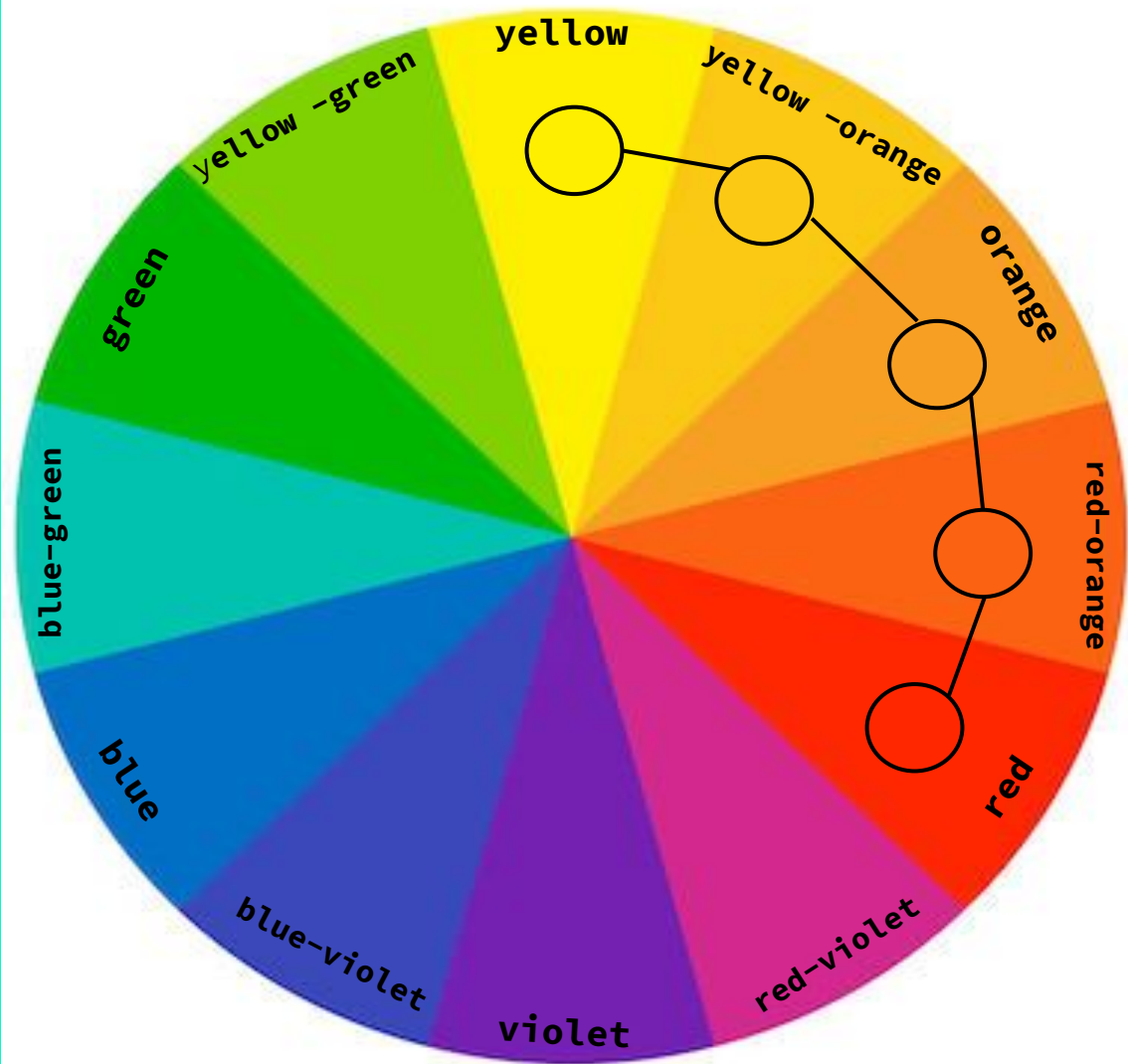
What is Analogous Color?

Remember: Color schemes are the colors an artist uses for the objects in the work -these are *not* mixed together

Analogous

3-5 neighboring colors on the color wheel. (colors are right next to each other - linked like a chain) Artists typically use at least 3 and no more than 5 colors in their analogous works.

Yellow, yellow-orange, orange, red-orange, red

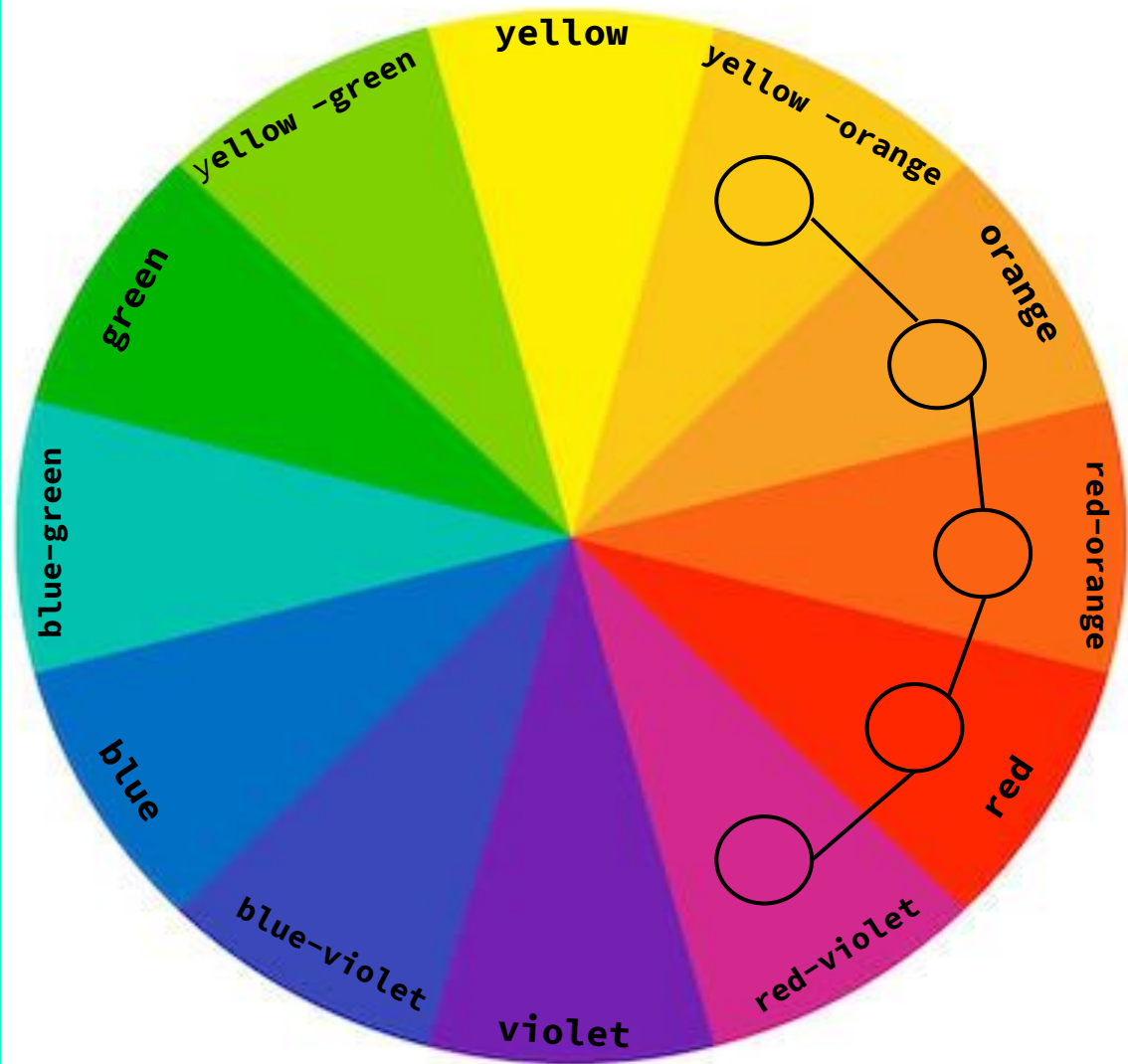


Remember: Color schemes are the colors an artist uses for the objects in the work -these are *not* mixed together

Analogous

3-5 neighboring colors on the color wheel. (colors are right next to each other - linked like a chain) Artists typically use at least 3 and no more than 5 colors in their analogous works.

Yellow-orange, orange, red-orange, red, red-violet

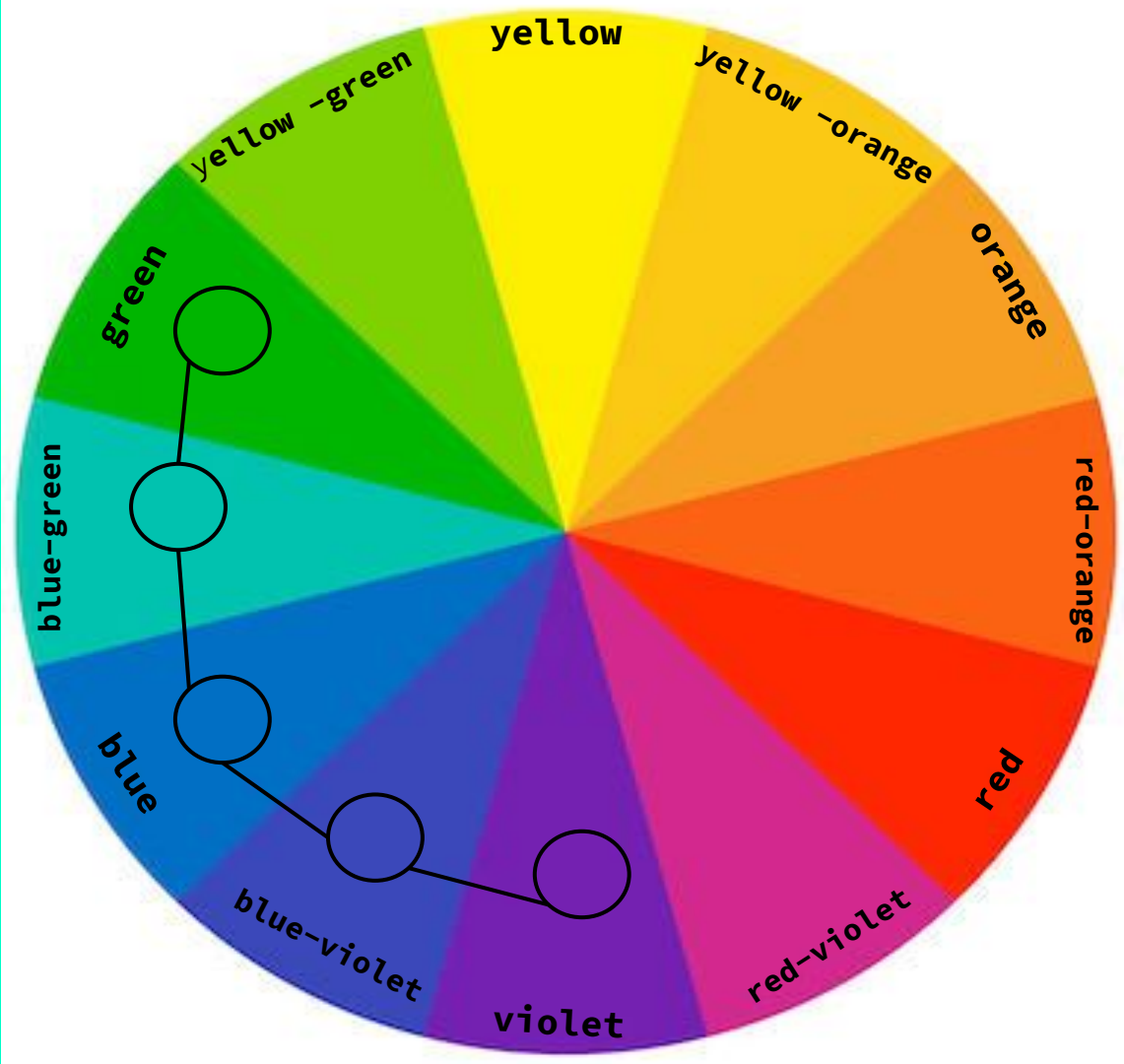


Remember: Color schemes are the colors an artist uses for the objects in the work -these are *not* mixed together

Analogous

3-5 neighboring colors on the color wheel. (colors are right next to each other - linked like a chain) Artists typically use at least 3 and no more than 5 colors in their analogous works.

Violet, blue-violet, blue, blue-green, green

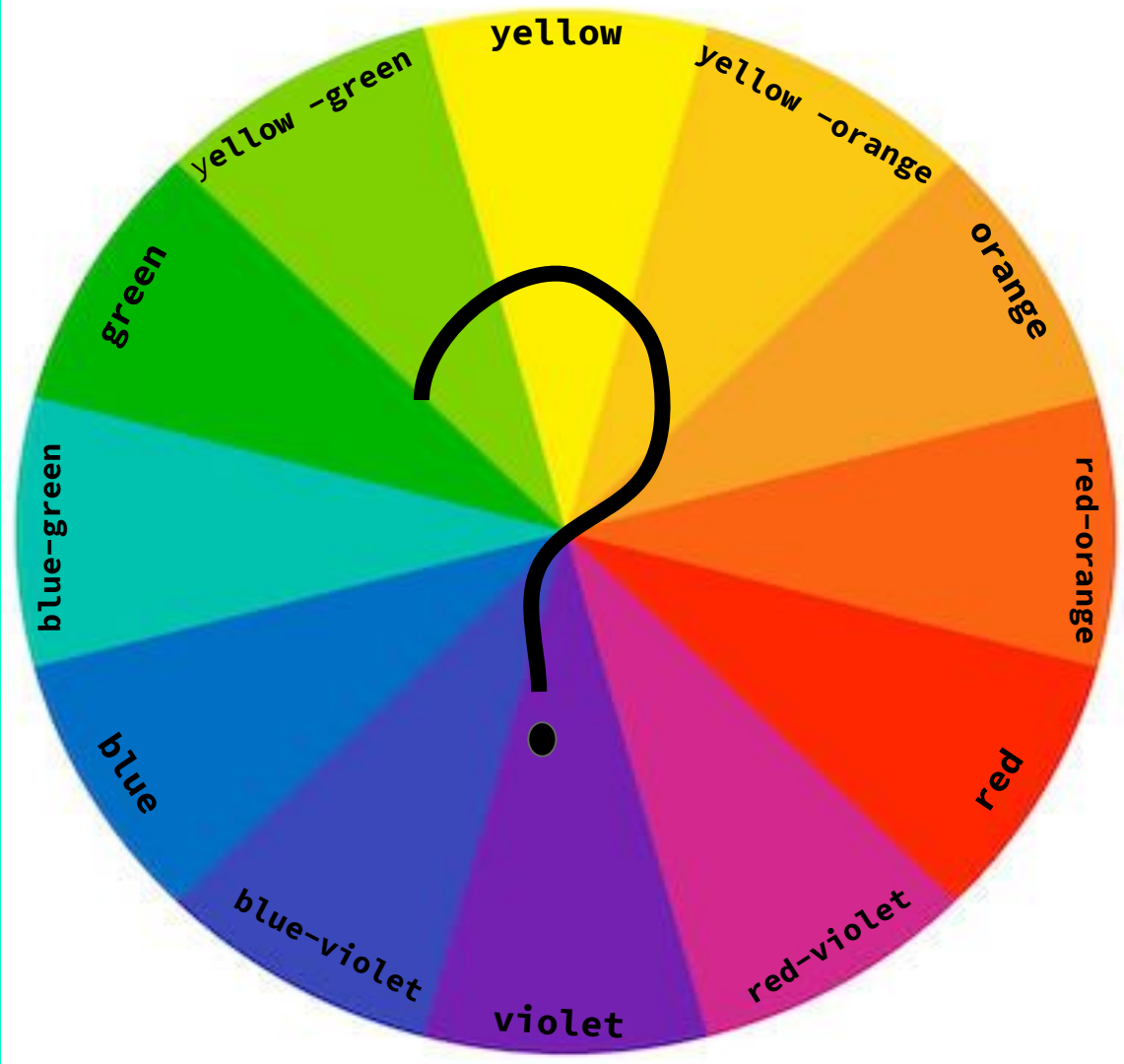


Remember: Color schemes are the colors an artist uses for the objects in the work -these are *not* mixed together

Analogous

3-5 neighboring colors on the color wheel. (colors are right next to each other - linked like a chain) Artists typically use at least 3 and no more than 5 colors in their analogous works.

There are many different combinations - hint: don't skip over the tertiary (intermediate) colors!

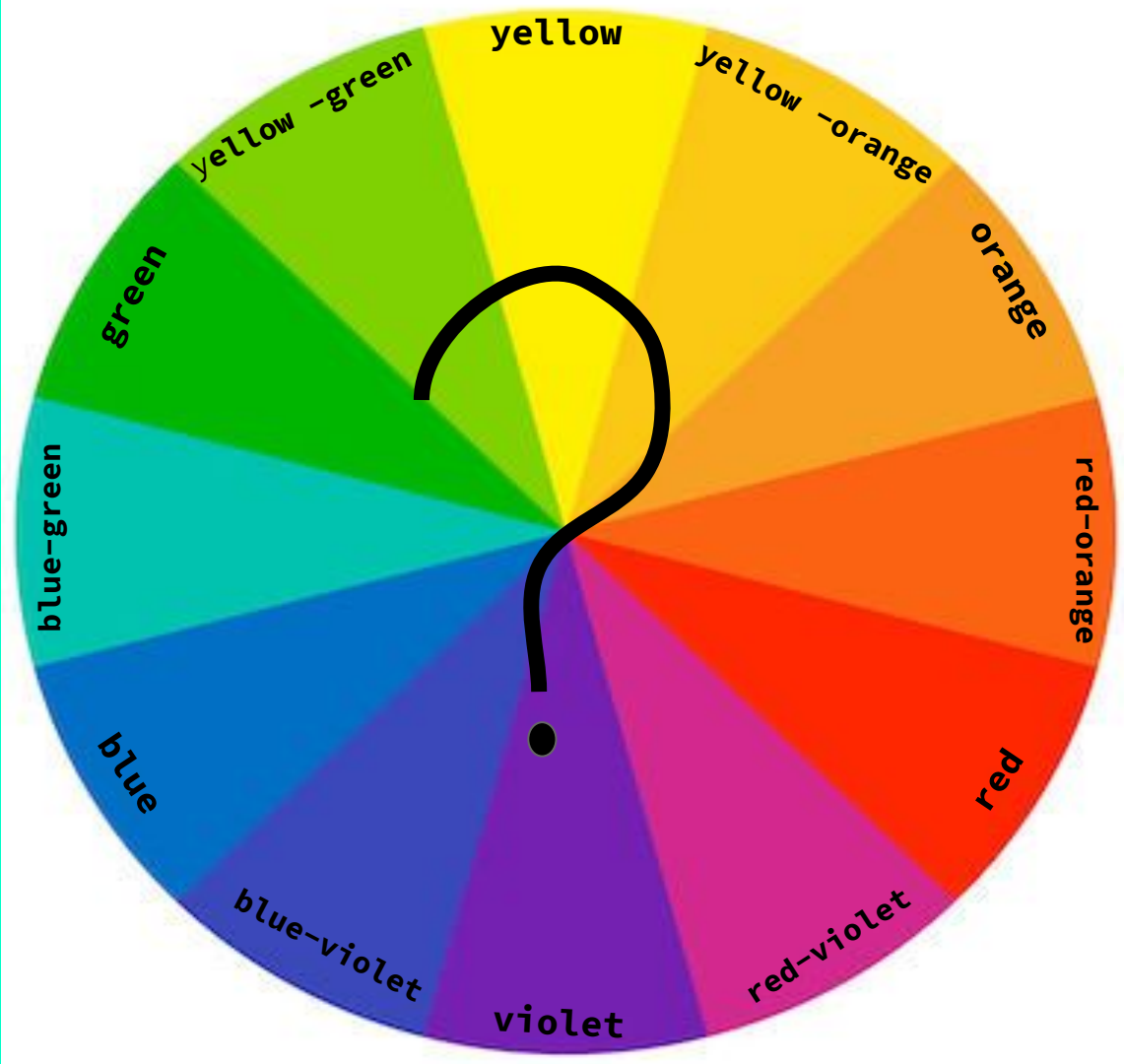


Remember: Color schemes are the colors an artist uses for the objects in the work -these are *not* mixed together

Analogous

3-5 neighboring colors on the color wheel. (colors are right next to each other - linked like a chain) Artists typically use at least 3 and no more than 5 colors in their analogous works.

What analogous colors will you use?



HERE ARE SOME REAL WORLD EXAMPLES OF ANALOGOUS COLOR SCHEMES...
CAN YOU THINK OF MORE?



You will now need the symmetrical line design.

You are welcome to use the media of your choice:

Colored pencil

Marker

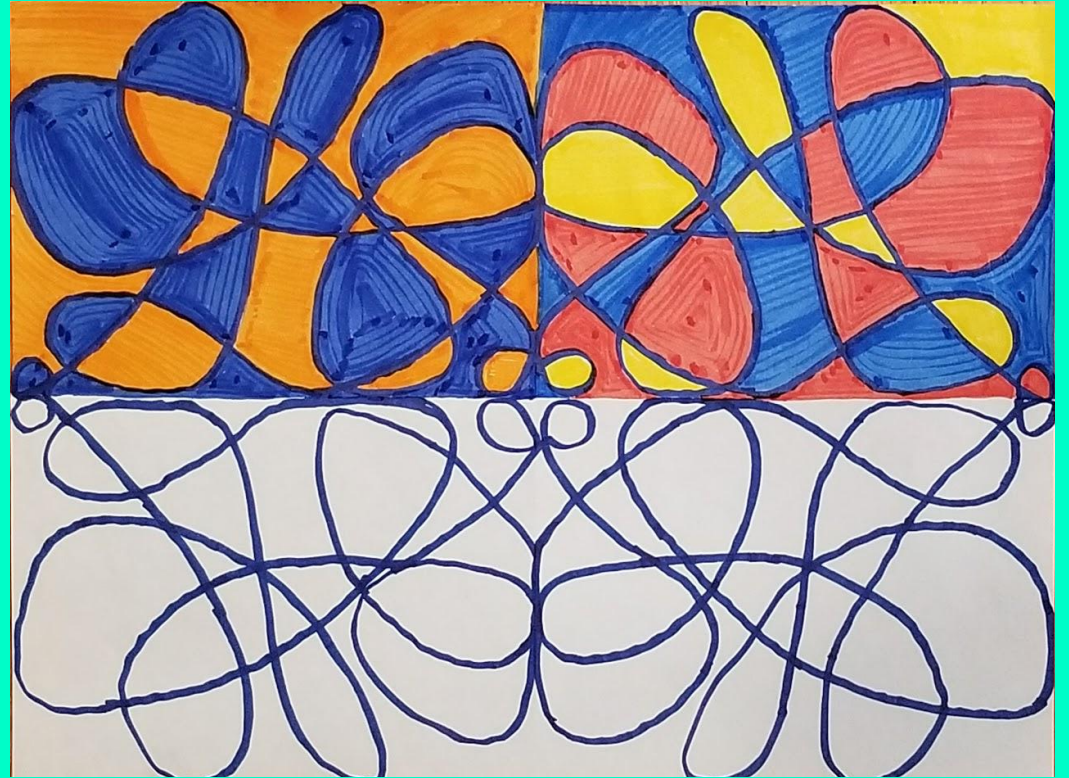
Poster paint

Watercolor

Fingerpaint

Nail polish (please use in a well ventilated area though)

Anything that makes color is fair game - this is a good time to experiment!



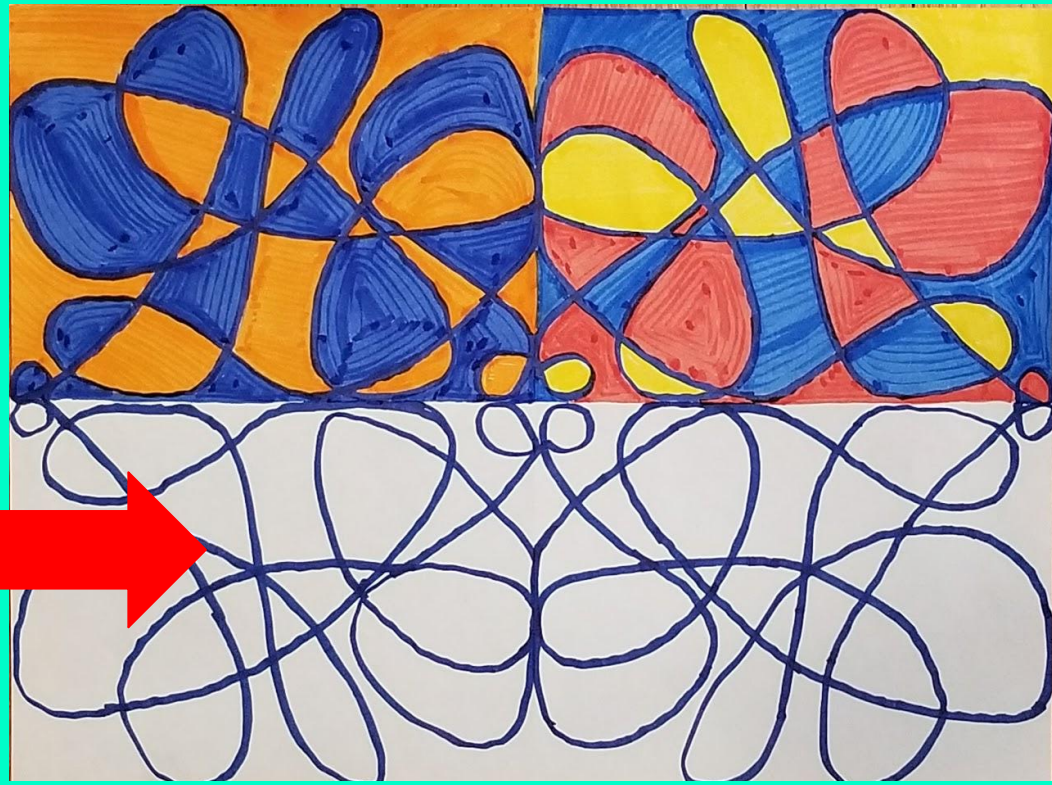
YOU CAN USE THE SAME MEDIA AS YOUR COMPLEMENTARY COLOR OR TRY SOMETHING NEW

Pick 1 of the 2 sections to color using the 3-5 colors of an ANALOGOUS color scheme.

I'll use yellow-orange, orange, red-orange, red and red-violet. Be sure all the shapes in that section have one of your analogous colors when you are done. **Leave the last section white for now.**

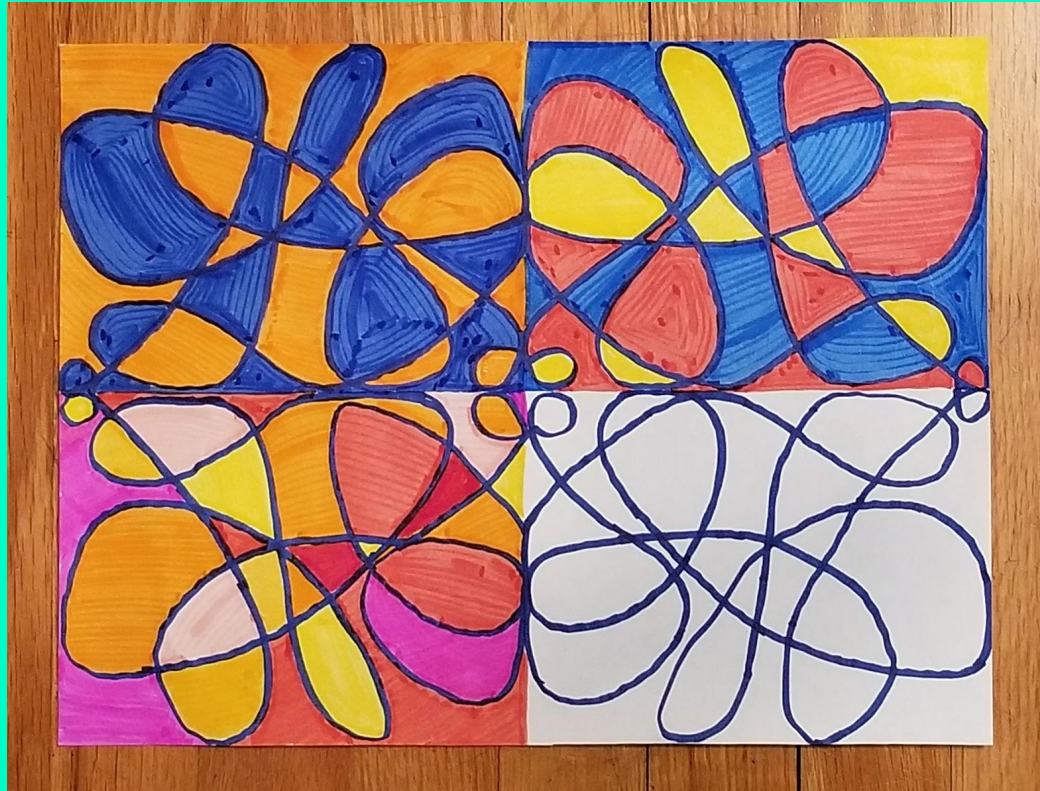
**You can use tints (lighter) and shades (darker) versions of the color but be sure it's the same color.*

***Change pressure or use layering for colored pencils or add white/black to the color if you are painting*

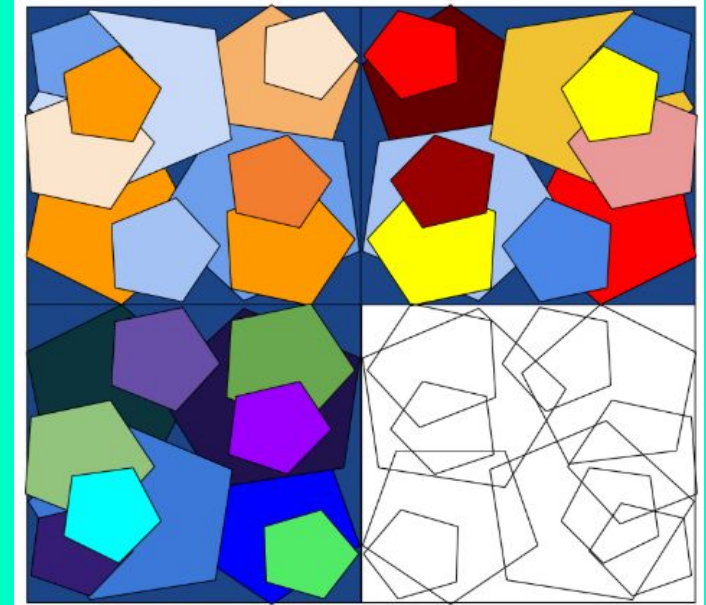


ANALOGOUS COLOR SCHEMES

MARKER ON PAPER



DIGITAL VERSION



HOW TO SHOW US YOUR CREATIONS...

*BE BOLD, BE SAFE, and TAKE
CARE OF YOU!*

*All the best,
Ms. Fields*

We'd love to see your
work!!!

Email your art teacher.

Bridger:
Jill_Fields@idschools.org

Nowlin:
shannon_brown@idschools.org